



**Quality Products Since 1968**

Manufactured by:

**Helm Welding (1983) Limited**

### **Four Auger TMR Mixer Feeders** **“FEEDPro Series”**

Our new “FEEDPro Series” of mixers have been created to replace our “C & S Series” which are gradually being phased out.

#### **Standard Features**

- Four auger mixing system
- Slip clutch style PTO shaft
- Large diameter augers with flighting thicknesses ranging from 3/8” to 1/2”
- Large diameter heavy wall auger tubes for extra strength to do the tough mixing jobs
- External grease banks
- Rear oil bath drive compartment lets all chains and sprockets run in oil
- Planetary gear reduction to add simplicity and reduce input H.P. requirements
- Bottom shear angle for the harder-to-mix rations
- Full 1/4” steel bottom plus liner
- All “FEEDPro Series” mixers come complete with either of several makes of basic read up, read down electronic scale systems

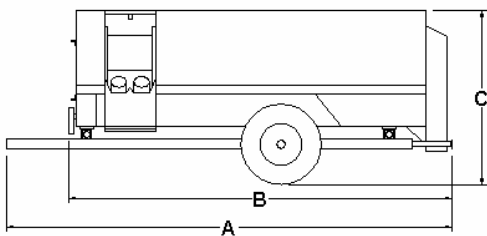
#### **Options**

- Choice of various different electronic scale indicators
- Remote indicator and remote zeroing capabilities
- Hydraulic raise and lower discharge chute
- Special discharge lengths
- Hydraulic flap on discharge chute
- Manual flap on discharge chute
- Magnet in discharge flap
- Diverter valve for tractors with only one set of remotes
- External grease bank
- Safety grid (standard on all stationary mixers)
- Stainless steel liners
- Battery box
- Light bar kit

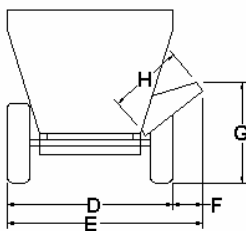
## “FEEDPro Series” Trailer Model Specification Table

| MODEL SIZE                     | 260            | 310            | 360               |
|--------------------------------|----------------|----------------|-------------------|
| A – Overall Length             | 190            | 214            | 238               |
| B – Min. Less Hitch            | 148            | 172            | 196               |
| C – Overall Height             | 87             | 87             | 90                |
| D – Tread Width                | 81             | 81             | 81                |
| E – Outside Tread to Discharge | 99 – 102       | 99 – 102       | 100 1/2 – 104 1/2 |
| F – Tread to Discharge         | 18 – 21        | 18 – 21        | 19 – 23           |
| G – Discharge Height           | 26 – 42        | 26 – 42        | 30 – 48           |
| Hopper Size                    | 84 x 120       | 84 x 144       | 84 x 168          |
| H – Discharge Length           | 36             | 36             | 42                |
| Bottom Augers                  |                |                |                   |
| - tube                         | 5 x 1/2        | 5 x 1/2        | 6 5/8 x 1/2       |
| - flighting                    | 3/8 & 1/2      | 3/8 & 1/2      | 3/8 & 1/2         |
| - diameter                     | 20             | 20             | 20                |
| Top Augers                     |                |                |                   |
| - tube                         | 4 1/2 x 3/8    | 4 1/2 x 3/8    | 5 x 1/2           |
| - flighting                    | 3/8            | 3/8            | 3/8               |
| - diameter                     | 20             | 20             | 20                |
| Shaft Diameter                 |                |                |                   |
| - drive bottom                 | 3              | 3              | 3                 |
| - drive top                    | 2 1/2          | 2 1/2          | 2 1/2             |
| Tire Sizes                     | 11 or 12R 22.5 | 11 or 12R 22.5 | 425/65R 22.5      |
| Tire Hubs                      | 8 - bolt       | 8 - bolt       | 8 - bolt          |
| Scale System                   | 3 point        | 3 point        | 3 point           |
| Roller Chains                  | 80 - 120       | 80 - 120       | 80H – 120         |
| Approx. Weight (lbs.)          | 8,600          | 9,750          | 11,150            |
| Approx. Tongue Weight (lbs.)   | 750            | 750            | 825               |
| Mixing Cap. (cu. ft.)          | 260            | 310            | 360               |

Unless otherwise indicated, all dimensions are in inches with standard equipment installed.  
 Specifications subject to change without notice.  
 Certain features shown may be optional.



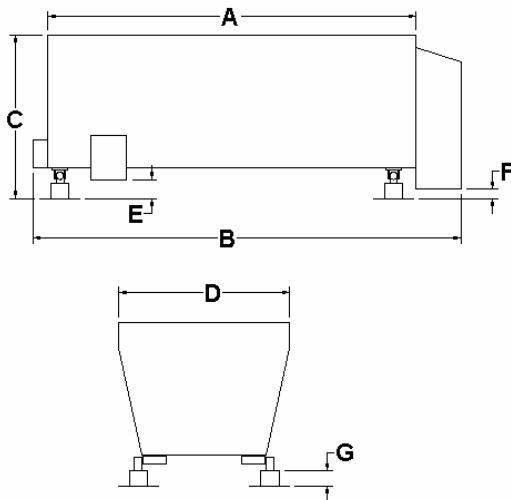
| ALL “FEEDPro Series” MODELS |                    |
|-----------------------------|--------------------|
| Hopper Bottom               | 1/4 plus 1/4 liner |
| Hopper Ends - bottom        | 1/4                |
| - top                       | 10 gauge           |
| Hopper Sides - bottom       | 1/4                |
| - top                       | 10 gauge           |



## “FEEDPro Series” Stationary Model Specification Table

| MODEL SIZE              | 260         | 310         | 360         |
|-------------------------|-------------|-------------|-------------|
| A - Hopper Length       | 120         | 144         | 168         |
| B – Overall Length      | 148         | 172         | 196         |
| C – Overall Height      | 80          | 80          | 80          |
| D – Width               | 84          | 84          | 84          |
| E – Floor to Door       | 12          | 12          | 12          |
| F – Oil Drain Clearance | 3           | 3           | 3           |
| G – Stand Height        | 8           | 8           | 8           |
| Hopper Size             | 84 x 120    | 84 x 144    | 84 x 168    |
| Bottom Augers           |             |             |             |
| - tube                  | 5 x 1/2     | 5 x 1/2     | 6 5/8 x 1/2 |
| - flighting             | 3/8 & 1/2   | 3/8 & 1/2   | 3/8 & 1/2   |
| - diameter              | 20          | 20          | 20          |
| Top Augers              |             |             |             |
| - tube                  | 4 1/2 x 3/8 | 4 1/2 x 3/8 | 5 x 1/2     |
| - flighting             | 3/8         | 3/8         | 3/8         |
| - diameter              | 20          | 20          | 20          |
| Shaft Diameter          |             |             |             |
| - drive bottom          | 3           | 3           | 3           |
| - drive top             | 2 1/2       | 2 1/2       | 2 1/2       |
| Scale System            | 4 point     | 4 point     | 4 point     |
| Roller Chains           | 80 - 120    | 80 - 120    | 80H – 120   |
| Approx. Weight (lbs.)   | 8,600       | 9,750       | 11,150      |
| Mixing Cap. (cu. ft.)   | 260         | 310         | 360         |

Unless otherwise indicated, all dimensions are in inches with standard equipment installed.  
 Specifications subject to change without notice.  
 Certain features shown may be optional.



| ALL “FEEDPro Series” MODELS |                    |
|-----------------------------|--------------------|
| Hopper Bottom               | 1/4 plus 1/4 liner |
| Hopper Ends - bottom        | 1/4                |
| - top                       | 10 gauge           |
| Hopper Sides - bottom       | 1/4                |
| - top                       | 10 gauge           |