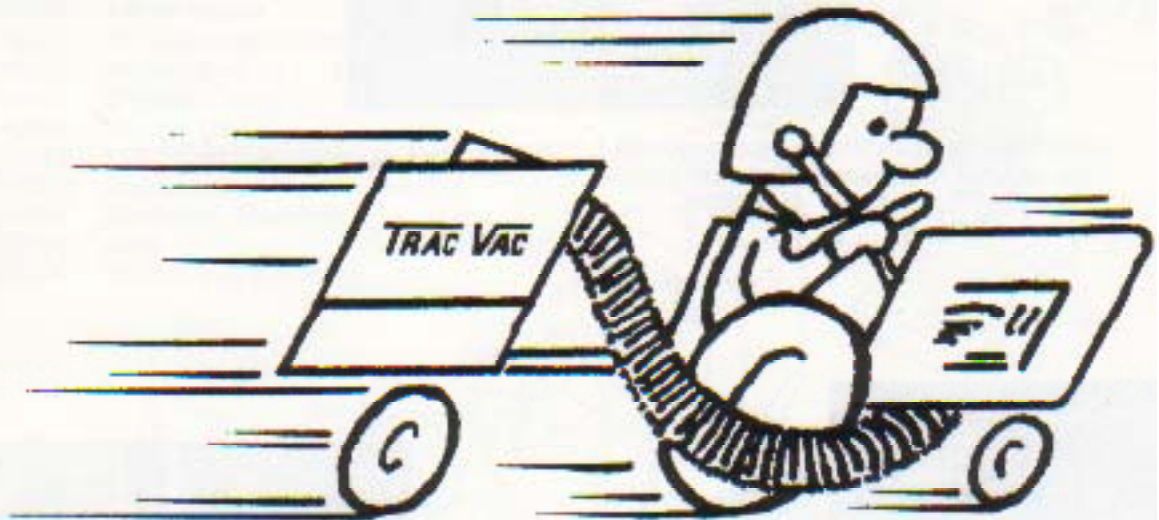


# **TRAC VAC**

MODELS  
2000-IC  
2000-V  
2100  
TRUCK LOADERS



## **OPERATING AND ASSEMBLY MANUAL**

**PALMOR PRODUCTS, INC.**

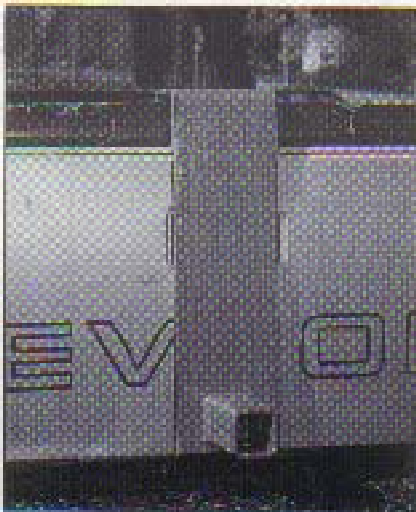
P.O. BOX 38—THORNTOWN, INDIANA 46071—800-872-2822—FAX: 317-436-2490

# ASSEMBLY INSTRUCTIONS

## MODELS 2000-IC, 2000-V, 2100 TRUCK LOADERS



Attach engine assembly to hitch assembly by inserting tube on frame into receiving tube on hitch. Secure with 5/8" bent pull pin and cotter pin.



### TAILGATE MOUNT

If using tailgate mount, secure hanger with T-handles. Use nylon acorn nuts to protect.

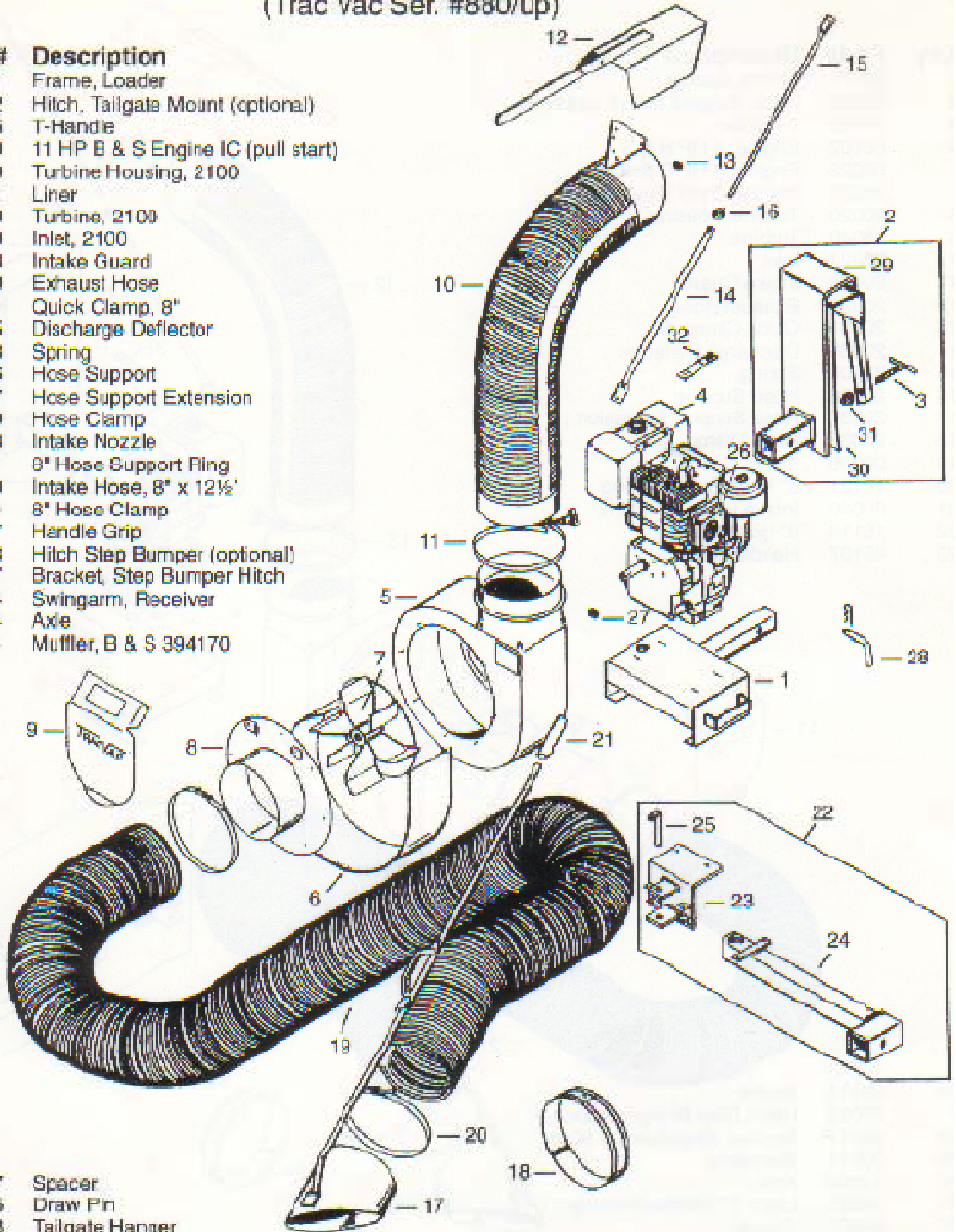


### SWINGAWAY BUMPER MOUNT

If using bumper mount, place bumper hitch on bumper and drill four holes. Fasten with 3/8" bolts and nuts. Attach swivel arm using 3/4" pin.

## MODEL 2100 11 HP TRUCK LOADER PARTS LIST (Trac Vac Ser. #880/up)

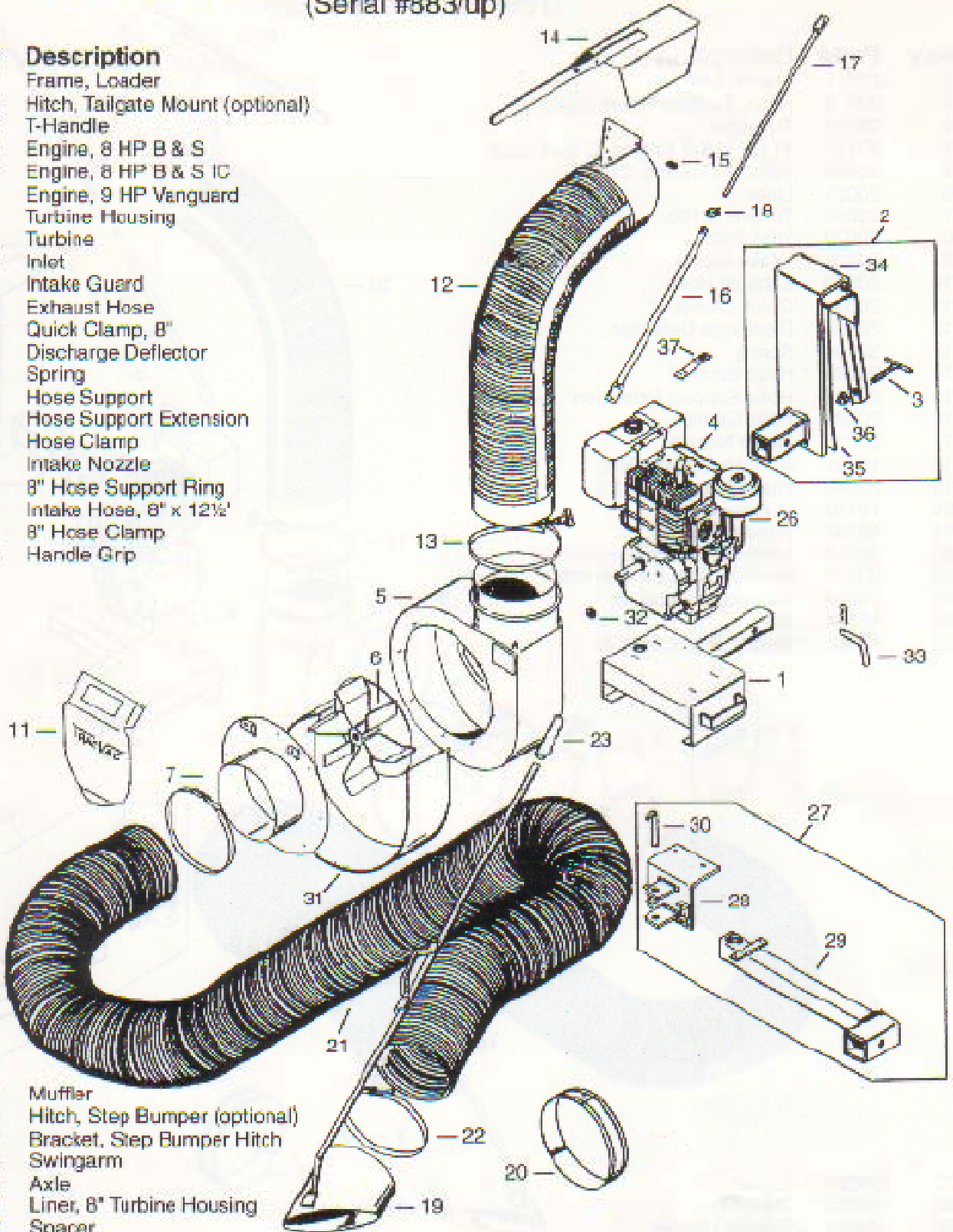
Key	Part#	Description
1	20011	Frame, Loader
2	20012	Hitch, Tailgate Mount (optional)
3	20016	T-Handle
4	20120	11 HP B & S Engine IC (pull start)
5	20060	Turbine Housing, 2100
6	20021	Liner
7	20050	Turbine, 2100
8	20070	Inlet, 2100
9	20028	Intake Guard
10	20030	Exhaust Hose
11	20031	Quick Clamp, 8"
12	20035	Discharge Deflector
13	32108	Spring
14	20036	Hose Support
15	20037	Hose Support Extension
16	20039	Hose Clamp
17	20038	Intake Nozzle
18	18121	8" Hose Support Ring
19	20040	Intake Hose, 8" x 12 1/2'
20	18119	8" Hose Clamp
21	45107	Handle Grip
22	20013	Hitch Step Bumper (optional)
23	20017	Bracket, Step Bumper Hitch
24	20014	Swingarm, Receiver
25	45104	Axle
26	18114	Muffler, B & S 394170



27	88027	Spacer
28	85225	Draw Pin
29	20023	Tailgate Hanger
30	200153	Tailgate Pad
31	20029	Nylon Acorn Nut
32	20051	Bracket, Turbine Supp., 2100

## MODEL 2000-IC, 2000-V TRUCK LOADER PARTS LIST (Serial #883/up)

Key	Part#	Description
1	20011	Frame, Loader
2	20012	Hitch, Tailgate Mount (optional)
3	20016	T-Handle
4	88102	Engine, 8 HP B & S
	86022	Engine, 8 HP B & S IC
	86023	Engine, 9 HP Vanguard
5	20020	Turbine Housing
6	86040	Turbine
7	20022	Inlet
11	20028	Intake Guard
12	20030	Exhaust Hose
13	20031	Quick Clamp, 8"
14	20035	Discharge Deflector
15	32108	Spring
16	20038	Hose Support
17	20037	Hose Support Extension
18	20039	Hose Clamp
19	20038	Intake Nozzle
20	18121	8" Hose Support Ring
21	20040	Intake Hose, 8" x 12½'
22	18119	8" Hose Clamp
23	45107	Handle Grip



26	86114	Muffer
27	20013	Hitch, Step Bumper (optional)
28	20017	Bracket, Step Bumper Hitch
29	20014	Swingarm
30	45104	Axle
31	20021	Liner, 8" Turbine Housing
32	86027	Spacer
33	85225	Draw Pin
34	20023	Tailgate Hanger
35	200153	Tailgate Pad
36	20029	Nylon Acorn Nut
37	20052	Bracket, Turbine Support, 2000-IC



Assemble deflector with  $3/8"$  x  $2'$  HHC, spring, washer, and locknut as shown.

Bolt support arm assembly to upper and lower tabs on exhaust hose with  $5/16"$  x  $3/4"$  HHC.

Attach metal exhaust hose to blower housing with  $6"$  quick clamp.

Attach wand to intake hose using hose support ring and  $6"$  worm gear clamp.

Attach intake hose to inlet using  $6"$  hose clamp.

## SPECIFICATIONS

	MODEL 2000-IC	MODEL 2000-V	MODEL 2100
ENGINE	8 HP B & S IC	9 HP B & S Vanguard	11 HP B & S IC
STARTER	Recoil	Recoil	Recoil
WEIGHT	150	170	180
GAS TANK	3 Qt.	3 Qt.	3 Qt.
GASCLINE	Regular or Unleaded	Regular or Unleaded	Regular or Unleaded
OIL	SAE 30 or 10W-30	SAE 30 or 10W-30	SAE 30 or 10W-30
CRANK CASE CAPACITY	1 3/8 Qt.	1 1/4 Qt.	1 1/2 Qt.
AIR TURBINE BLADE	6-Blade Forward Curve	6-Blade Forward Curve	6-Blade Forward Curve
OPERATING SPEED OF ENGINE	3800 RPM	3800 RPM	3800 RPM
INTAKE HOSE	8" x 12½' EPDM	8" x 12½' EPDM	8" x 12½' EPDM
EXHAUST HOSE	8" Flexible Metal	8" Flexible Metal	8" Flexible Metal

## OPERATING PROCEDURE

1. Follow engine manufacturer's instructions in preparing engine for operation.
2. Inspect area to be vacuumed and pick up all harmful objects.
3. Periodically tighten all bolts.
4. Listen for unusual vibration of engine or air turbine. If excessive vibration is present, STOP engine and check for damaged blade.
5. Always shut off vacuum engine before servicing.
6. When removing clogs, SHUT OFF ENGINE.

## WARRANTY

The Manufacturer guarantees each new TRAC VAC to be free from defects in workmanship and material and will replace, F.O.B. our factory, any defective parts within one year from purchase date. (90 days for commercial application) providing such parts are returned to the factory, transportation charges prepaid, and subject to our inspection. We will pay no bills for repairs made outside our factory unless authorized by us, and the above agreement shall not apply to any defects resulting from misuse, alterations, negligence, or accident. When defective parts are replaced free of charge it is agreed that the manufacturer is not liable for expenses covering labor, or any other expenditures that may be incurred in the replacement of defective parts. We reserve the right to incorporate changes in design without obligation to make these changes on units previously sold.