

DMP 2401-3001-3201 TC/FMT 3000-3200



Disc mower conditioners



aDMP 2401-3001-3201 TC/FMT 3000-3200

The best solution to a perfect cut



Wedge-shaped cutter bar

Wedge-shaped cutter bar

The "Wedge" shaped cutter bar, with free space at the leading edge, gives less ground resistance and glides smoothly over small obstacles without "bulldozing". This feature means that the machine will perform particularly well in soft soil conditions and also allows for a lower cutting height than other designs (to add to the strength, the cutter bar is fully supported along its entire length by a tapered reinforcement beam).

Three blades per disc for constant cutting

With three blades per disc Vicom mowers are constantly cutting. This means a third less load per blade and an even load on the drive and smoother power usage in addition to producing a neat, cleanly cut stubble. Each steel blade is precisely angled to immediately convey the cut crop upwards with a combination of mechanical action and air flow towards the conditioning rotor or rollers.

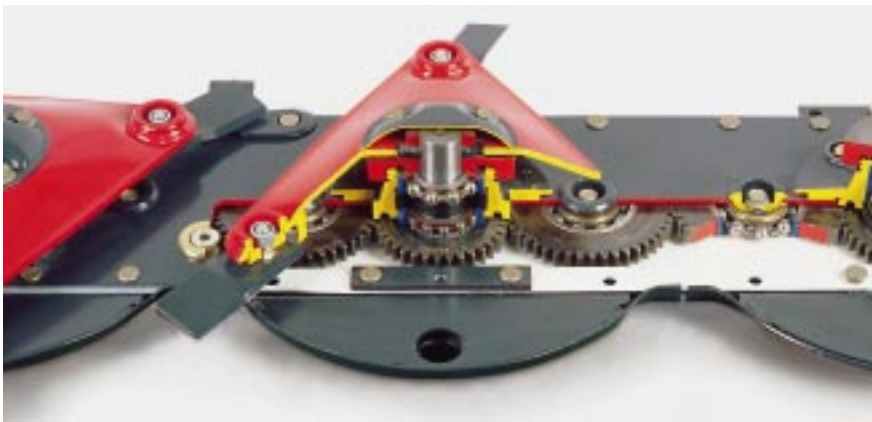
Contra-rotating cutting discs for a perfect cut

Vicom mower-conditioners of all cutting widths have contra-rotating discs. Apart from the immediate transport of crop to the rear this system ensures the best possible cutting performance in all crop conditions.

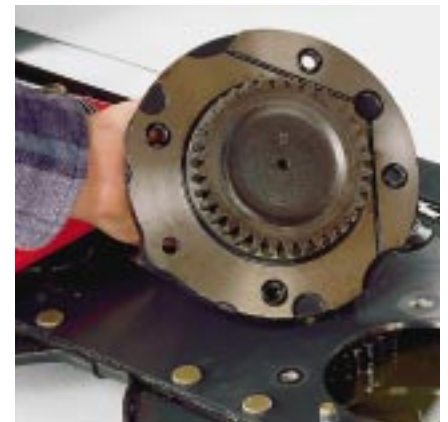
Long life blades

Vicom disc blades are made of hardened high grade steel. A precision-ground cutting edge extends to their entire length for a maximum service life. Furthermore, they are reversible, with a second cutting edge on the reverse side.

Well sealed gears and bearings



Top service hubs





Top service hubs

Vicon's new top service hubs provide for simple maintenance. Each cutter head is serviceable without having to dismantle the entire bar. These new hubs feature widely spaced bearings for enhanced load carrying and incorporate a shear pin which protects the cutterbar in the event of an impact with a foreign object.

A unique combination of seals protect the shafts and bearings against damage from dust and corrosive grass juices.

Fully protected cutter bar bottom

Direct drive of the cutter bar



Fully protected cutter bar bottom

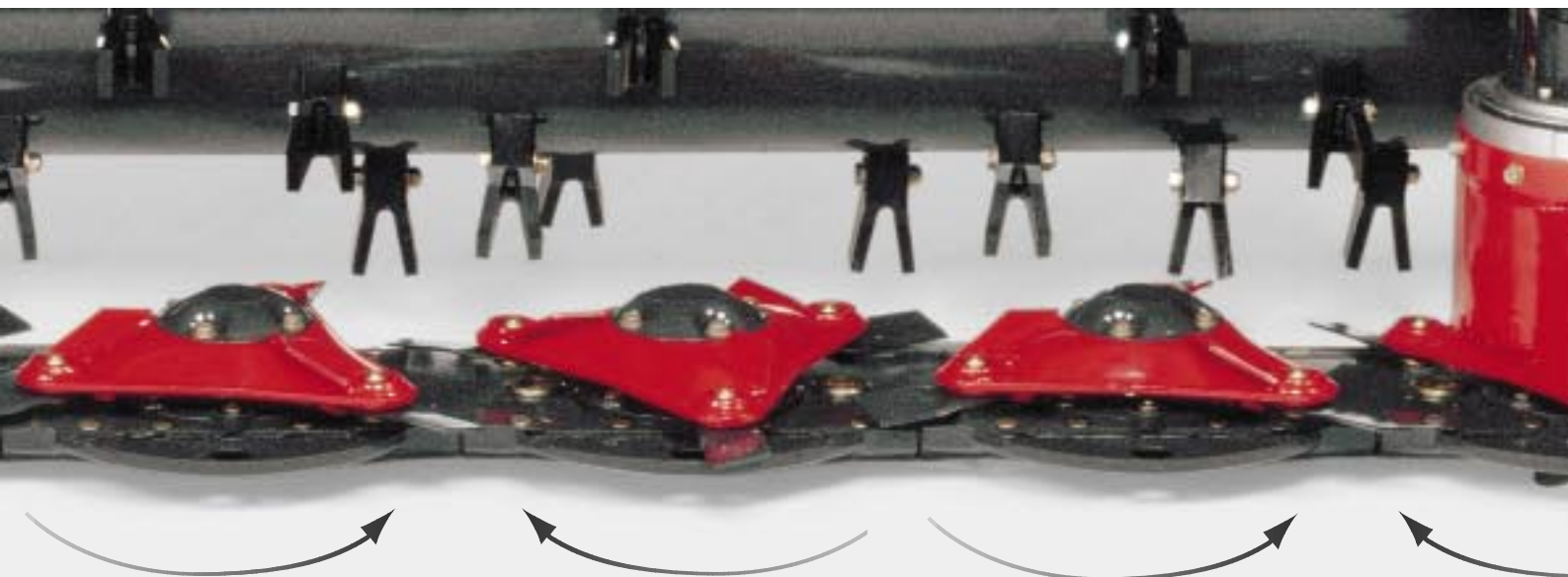
A fully protected cutter bar bottom reduces bar wear in stony, abrasive conditions and has additional replaceable wear strips as standard equipment for an even longer life.

Direct drive on the first disc

The direct drive on the first disc dispenses with troublesome inner skirts. No risk of the cutter bar clogging up or snagging the crop when driving over the swath.



Contra-rotating three bladed discs: the best solution to a perfect cut





DMP 2401-3001-3201TC/FMT 3000-3200

Mowing and conditioning over the full width

Conditioner rotor with nylon fingers for intensive conditioning

The V-shaped nylon fingers of the conditioner rotor effectively condition the mown crop over the full cutter bar width. The thin crop layer is evenly bruised over the entire width against a conditioning plate which can be adjusted to suit the type of crop and the desired conditioning intensity. The drum of the conditioner rotor is fully enclosed. This prevents damage from imbalance as no grass or dirt can enter the drum.

Wide or narrow swath

The conditioner lays the mown forage in a fluffy swath or, if the hood's deflector vanes are reset, spread across the full width.

Adjustment of the vanes is made by loosening a thumb screw and pulling two levers - one for each half of the mower.

Fast lifting at headlands

A new hydraulically operated parallelogram system lifts the mower horizontally without moving the three-point linkage of the tractor. The mowing unit is kept parallel to the ground as it is lifted, so swath damage is eliminated.

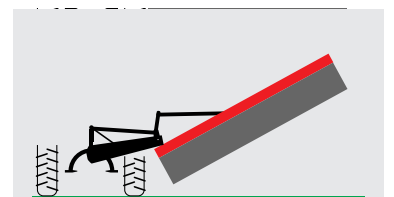
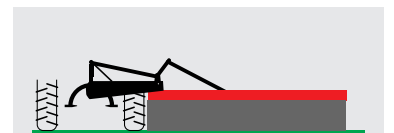
Spring loaded break-away

In the event of a collision with a firm obstacle the mowerbar will swing back thus absorbing the heavy shock.

By reversing the mower the break-away is reset in the working position.



Spring loaded break-away



Spring loaded break-away



Full width conditioning rotor

Easy hitching and unhitching

Whether in the work or transport position, Vicon disc mowers are easy to hitch to the tractor because the linkage points are always in the same position.

Designed to withstand continuous load, the sturdy headstock meets the requirements of large acreage users.

Spring cushioned transport position

The mower is folded vertically behind the tractor for maximum safety during transport. The weight is evenly distributed and close to the tractor. A shock absorbing coil spring protects headstock and tractor from excessive forces as a result of humps and bumps. The tractor remains well under control even during high speed (50 km) road transport.



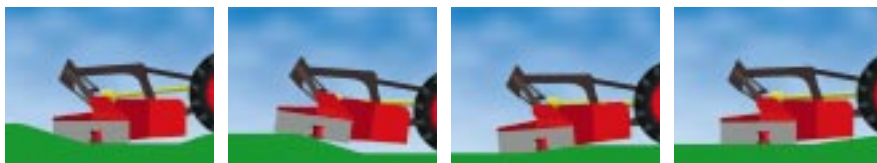
Well balanced transport position

FMT 3000-FMT 3200

Cutting tight to the ground with Vicon's Free Float Suspension System



Free Float Suspension System (FFS): the mower unit floats over ground contours without uneven fields damaging or unsettling the machine



The overhead frame design with the mower-conditioner suspended by links and coil springs allows cutting tight to the ground



Doubling tractor capacity

The Vicon FMT 3000 (3,00m) front mower allows you to "double" the capacity of your tractor as the rear pto shaft remains free for a second mower or a harvesting machine.

Once conditioned by the nylon fingers and the adjustable conditioning plate, the crop is laid down in the swath at right angles to the driving direction, so it can be easily lifted by the pick-up of any following machine.

Free Float Suspension System

The new overhead frame design with the mower-conditioner suspended by links and coil springs allows cutting tight to the ground. The mower unit floats over ground contours without uneven fields damaging or unsettling the machine. When encountering humps or bumps the mower unit lifts and swings back at the same time reducing the sudden impact on the mower bar. The high-lift design gives swath clearance at headlands, while the central links and coil suspension allow pivoting movement in two directions.

Technical specifications



DMP 3001TC



FMT 3000

	DMP 2401TC	DMP 3001TC	DMP 3201TC	FMT 3000	FMT 3200
Dimensions and weights					
Working width (m)	2.40	3.00	3.20	3.00	3.20
Approx. weight (kg)	810	920	960	1190	1240
Mounting					
3-pt rear-end mounting	•	•	•	-	-
Ground pressure controlled by adjustable springs	•	•	•	•	•
Single phase quick action coupling	-	-	-	•	•
Drive system					
Pto power requirement kW (pk)	44 (60)	51 (70)	55 (75)	51 (70)	55 (75)
Pto speed					
540 rpm	•	o	o	o	o
1000 rpm	o	•	•	•	•
Cutting discs and blades					
Number of cutting discs	6	8	8	8	8
Number of cutting blades	18	24	24	24	24
Ajustable skids	o	o	o	o	o
Transport position					
Vertically beside the tractor 18°	•	•	•	-	-
Conditioner					
Rotor with nylon conditioning fingers	•	•	•	•	•
Rotor with steel conditioning fingers	-	-	-	o	o
Adjustable conditioning plate	•	•	•	•	•
1000 rpm rotor speed	•	•	•	•	•
Swath width					
Wide spreading	•	•	•	•	•
Narrow swath version, cm	100-240	120-300	120-320	120-250	120-320

• = as standard o = optional

This documentation is not binding. Availability of models, specifications and optional equipment may differ from country to country. Please consult your local dealer. Specifications and design are subject to change without notice. Printed in Holland. © Kverneland Group



Vital Parts

The Kverneland Group regards the sale of each machine as the start of a long-term and valuable relationship. To support the relationship, we provide the vital high quality spare part and an efficient spare part service.

Our parts are designed to ensure reliability, safety and an optimal performance of the machines. The quality lies in the innovative construction work and in the production processes at our production sites. The spare parts are available in close proximity to you; at our dealership in your area as well as at our distribution centres. We maintain high availability of spare parts to ensure minimum operational disruption at your end.

You can depend on the Kverneland Group to offer a premium service. It's vital for us!





Kverneland Group is the largest specialised producer and distributor of farming implements in the world. The Group is a family of strong brands enabling us to provide both the farmer and dealer with a unique and complete range of high quality products for soil preparation, grass harvesting, seeding, spreading, spraying, potato cultivation and grape harvesting.

www.kvernelandgroup.com



A full range of forage harvesting equipment

Vicon offers you a full range of forage harvesting equipment: drum and disc mowers and mower conditioners, tedders, rakes, fixed and variable chamber round balers, big square balers, bale wrappers, fertiliser spreaders and maize choppers.



All Vicon machines are protected by a Duracoat powder paint coating. The result is a sealed extremely hard wearing and attractive finish.

Kverneland Group UK Ltd

Walkers Lane, Lea Green, St. Helens
Merseyside WA9 4 AF
Tel 01744 853 200, Fax 01744 853 400

Kverneland Ireland Ltd

Hebron Industrial Estate
Kilkenny
Tel 056 51597, Fax 056 62207

Kverneland Group

Global Product Area Grass
P.O. Box 1000
2150 BA Nieuw-Vennep
The Netherlands

